



SSV WORKS, 201 N. Rice Ave Unit A, Oxnard, CA 93030  
www.SSVworks.com | Phone: 818-991-1778 | Fax: 866-293-6751

# WC2-FKP65

Textron Wildcat

## 6.5" Speaker Front Kick Panels

### WARRANTY INFORMATION:

All SSV Works enclosures are covered by a limited lifetime warranty against defects in material or workmanship. All SSV Works Electronics are covered by a limited 1 year warranty against defects in material or workmanship. All SSV Works Speakers are covered by a limited 1 year warranty against defects in material or workmanship. Labor for replacement of defective components is not covered. Contact SSV Works for further warranty information.



Please read and understand these instructions completely before installation to avoid possible injury, or damage to the accessory or vehicle.

### TOOLS NEEDED FOR INSTALLATION

- T-30 Torx Driver - Phillips Screwdriver - Drill with 1/4" Drill bit - Scribe or Punch tool

### PARTS LIST IMAGES



1. WC2-FKP65 Enclosures (1 pair)



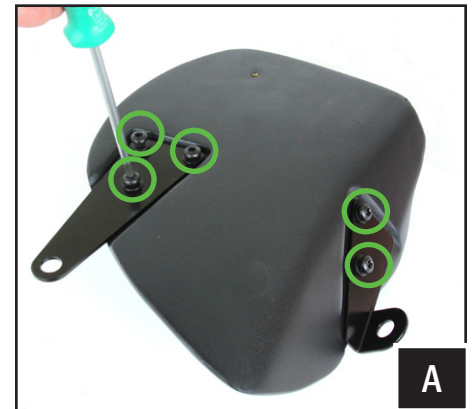
2. M6 x 16mm Screws x 12



3. M6 Washers x 12



4. #7 Screws x 8



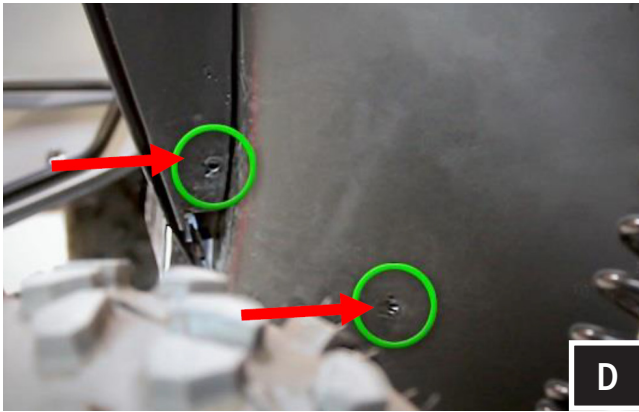
A. Bolt down the pod brackets like above using five (5) M6 Screws and Washers.



B. Set the unloaded pod in place and mark the top mounting location with a scribe or punch tool on to the floorboard.



C. With a 1/4" drill bit, drill the screw hole for mounting the speaker pod.



D. Remove the indicated factory screws from the wheel well. Save the screws as these will be used to mount the kick panel.

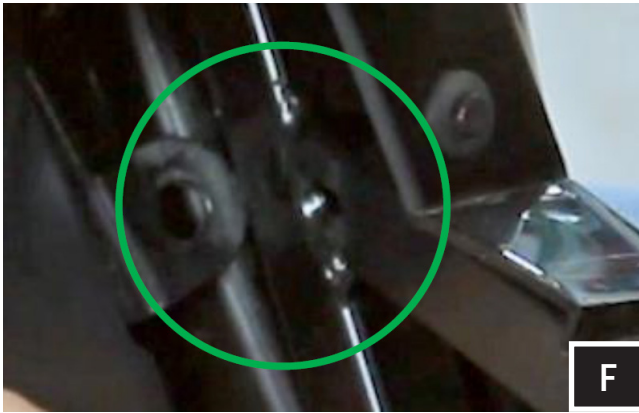


E1



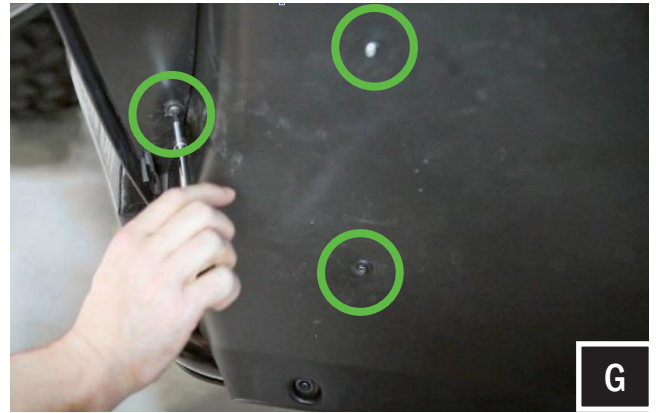
E2

E. Connect the speaker harness to the enclosure harness and use a screwdriver secure the speaker to the pod (E1) Place the loaded enclosure in location for mounting (E2).



F

F. Ensure this mounting tab is inserted between the metal frame and the plastic panel.



G

G. Using the factory hardware, bolt down the bottom and side bracket. Using the supplied nut, bolt down the top mounting screw.

Route the speaker wire away from any moving parts and any sharp metal, then connect to the amplifier.

Connecting the WC2-FKP65 using the pre-installed, two-pin connector will require an optional SSV Works plug-&-play harness (WP-H1149 - sold separately). If you are not using the WP-H1149 harness, simply cut off the two-pin connector and follow the wiring instruction below.

Repeat for the other side

## WIRING INSTRUCTIONS

For proper sound, ensure the speaker polarity is correct connect the "+" to the "+" and the "-" to the "-" from the speaker wire to the amplifier. If using with an SSV Works complete system refer to the amplifier wiring instructions for more detailed wiring information.

