

# SSV WORKS

## A LITTLE THUMP GOES A LONG WAY

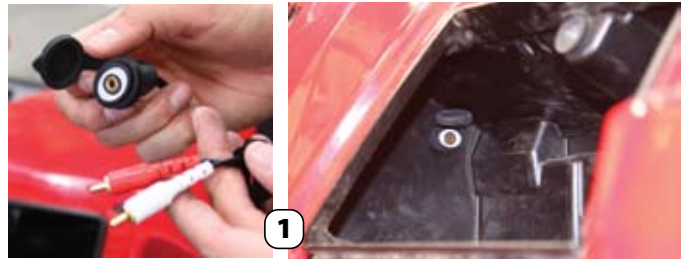


For most of us, having tunes with us on the trail is a necessity. There is nothing better than taking a break from our hectic workweek and enjoying the great outdoors with our family, friends and, of course, 3800 of your favorite tunes. There is also the other half that has always wanted tunes in their UTV but have shied away from such ear tingling delight. This is partly due to the lack of options or know-how in fitting speakers and an amp into your ride that can carry the sound over the engine noise, as well as keeping your system working in dusty or moist conditions. SSV Works has come up with multiple kits for your Rhino, Ranger, RZR, Prowler or Teryx. Unlike other kits that you may see on the market today, SSV Works has spent some serious time coming up with kits for your specific side-by-side that are designed for optimal sound quality that are acoustically engineered.

If you are looking to add some sound to your UTV, SSV Works has speaker enclosures (pods) that are made out of 100% Fiberglass and finished in a black texture coat to match your stock UTV finish. And if you are into customizing your side-by-side all speaker pods can be painted to match your vehicle's paint scheme. SSV Works has front speaker pods that house a 6-1/2" speaker for the Rhino, Teryx, Prowler and RZR, as well as front speaker pods that house a 6x9" for the RZR and Ranger. If two speakers are not enough, they also offer additional speaker pods for the rear of your vehicle in a 6-1/2" or 6x9" speaker enclosure, depending on your vehicle. Completing the overall sound experience, they also offer a Sub box for all applications that typically sits on the floorboard, with the exception of the RZR, in which it fits nicely under the dash. While you can purchase SSV Works speaker enclosures without speakers, it is highly recommended that you purchase their speakers. They have done a lot of testing to find the least expensive and durable combinations that yield the best possible sound.

Before we get into our overall impression of the SSV Works Gen 2 Polaris Ranger sound kit, let's show you how easy and clean this install is. We are starting with a bone stock 2009 Polaris Ranger XP and chose to go with a 4-channel 800 watt amp. With today's technology, we went with SSV's "No radio needed" kit, which gives us the ability to directly hook up an iPod or an MP3 player. We also needed a wiring kit to connect our 10" center sub box console with integrated middle seat foot rest, as well as our two 6x9" front kick panel speaker enclosures.

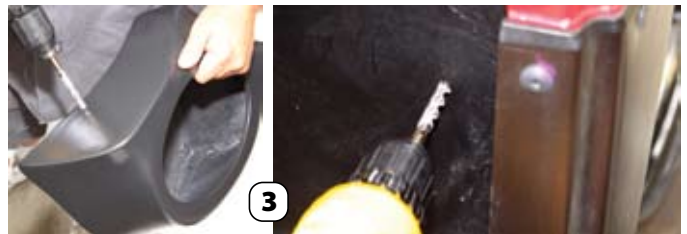
### Front Speaker Pod install



1) The first thing we need to do is install the "no radio needed" iPod/MP3 kit. For this, we simply drilled a hole in our glove box to mount the necessary female plug adaptor for our iPod/MP3 player wire to connect to.



2) We located an area on the dash to mount our volume control knob and drilled a hole, mounted the controller, and connected these two together and pulled the loose wires under the hood to the front of the vehicle that we will later connect to our amp.



3) Next, we start work on the speaker enclosures. SSV Works has already pre-drilled the mounting hole location into the speaker pods, so all we have to do is set them into place and mark the holes onto the fender well. After making our marks, we drill the holes with a 1/4" drill bit. We place the speaker pod back onto the fender well and mount the pod using the supplied hardware. Once your pod is mounted into place, you will need to drill a hole through the speaker pod and the fender well to run your speaker wire through.

# SSV WORKS

AUDIO SYSTEMS FOR YOUR  
SIDE BY SIDE VEHICLE

## YAMAHA RHINO



## AUDIO MADE EASY

SSV Works custom molded 100% fiberglass speaker enclosures bolt in with no cutting for easy install and are tuned for optimum sound quality. They feature black texture to match factory plastics, stainless hardware and step-by-step instructions. Can be custom painted to match your color scheme. Front, rear and subwoofer enclosures are available.



## POLARIS RZR



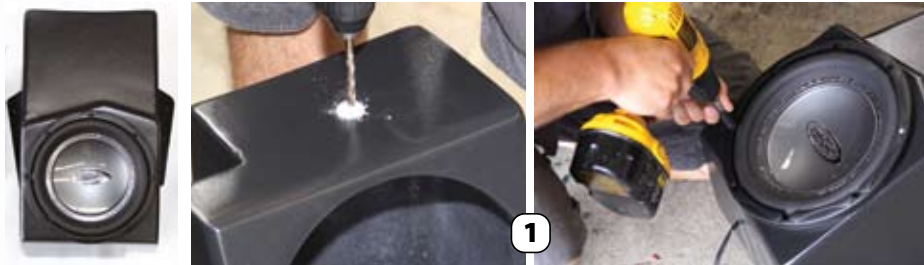
RHINO, TERYX, RZR, PROWLER  
AND RANGER SYSTEMS AVAILABLE

SIDE BY SIDE VEHICLE SPECIALISTS  
[www.SSVWORKS.COM](http://www.SSVWORKS.COM)



4) After both sides are done, you can run your wires through the holes, connect your speaker wires to the speakers and install the speakers into the SSV Works speaker pod, then press the grill on the speakers and the front speaker pod installation is complete.

## Sub box console install



1) You will need to drill a 1/4" hole in the front of the box to run the speaker wire out of the enclosure. You may also need to drill a hole in the kick panel or find a small opening to run the speaker wire to the front of the vehicle. Install speaker into box.

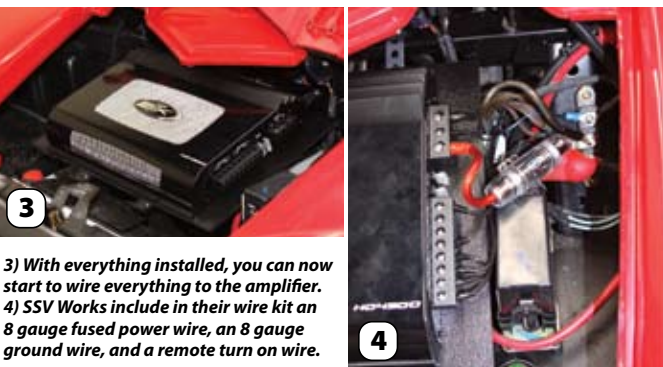


2) With the subwoofer mounted in the box, place the enclosure on the floorboard from the passenger side. This may be a little tricky, but it fits and is meant to be tight. Once the box is in place, use the supplied screws to securely mount the box to the floorboard and you are done.

## Amp installation



1) Included with the amp kit are two metal brackets that attach to the factory crossbar that will support the supplied amp board. Once the rear of the amp board is attached, you will need to drill a hole into the front of the board through the factory plastic hooks. Using the supplied speed clip and screws, attach the board to the vehicle.  
2) Center the amp on the board, and using the supplied screws, mount it into place.



3) With everything installed, you can now start to wire everything to the amplifier.  
4) SSV Works include in their wire kit an 8 gauge fused power wire, an 8 gauge ground wire, and a remote turn on wire.

Note: Sealing the holes that your speaker wires run through with some silicone will prevent air leaking and improve sound quality as well as keep the elements out of your enclosures.

Continued on next page



As you can see, the SSV Works Polaris Ranger kit is as clean as they get. With a simple install that took us around three hours to complete, the next thing on our list is to actually try it out. We hooked up Trevor Kaplan's iPod (owner of SSV Works) to our newly installed system and listened to a range of music genres from country music's Carrie Underwood to classics like Bon Jovi, then finished it off with Flo Rida's Right Round. To be honest we have heard other sound systems before (mine included) that sounded pretty good. But after hearing our newly installed system, all otherst paled in comparison. The sound clarity was, to say the least, "impressive" to "off the charts" for a side-by-side. Sitting behind the wheel, the pod placement and angles are at the optimal driver/passenger position for the best sound quality. Outside the vehicle, the volume and sound quality diminish very little. From 30 yards away you will still enjoy

great sound quality. If you just can't swing the extra cash for the subwoofer and enclosure, the two 6x9" speaker set-up sounded almost as good, but obviously lacked the bass that you get from the sub. You can always add this later. If you enjoy taking a break from the daily grind in your UTV, bring the sound of your favorite music to help get you further away. At the end of the day, very few things get us excited. But when all is said and done, the SSV Works put a childish grin on our mug. Thanks, SSV! **UTVOR**

Visit SSV Works on the web at: [www.ssvworks.com](http://www.ssvworks.com)



## THE OFF ROADERS by Don Merrifield

