

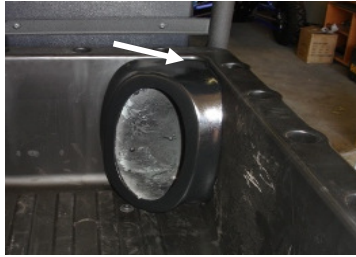
RG-RKP69 - Rear Kick Panel

Tools Needed For Installation

Drill with 1/4" Drill Bit
#2 screw tip or screwdriver
Wire Crimpers / Strippers



Installation Instructions:



Line up the kick panel in the corner of the bed flush with the top
(You will know the kick panels are facing the right direction
when there is a slight upward angle toward the rear of the bed)

Using the 1/4" drill bit drill a hole in the bottom of the kick panel
this will be used to run your speaker cable out of the pod



Mount the speaker to the bed using the 4 screws provided



The holes in the front corners of the bed will be used to run the
speaker wires out of the pods



After attaching the speaker wires to the speaker install the speaker into
the SSV Works kick panel

